

NC2000 Data Analysis Tool

Product Description

The NC2020 software compliments the NC2000 TETRA Field Tool and allows post collection replay and analysis of the NC2000 data files producing a comprehensive range of reports, graphs and maps which can be easily exported.

Map Features

Maps show 7 different data overlays:

1. Serving Cell RSSI
2. Best Neighbour RSSI
3. User way points
4. Hand over points
5. Affiliation Plot
6. PESQ Voice Quality MOS plot for up and down links
7. Event and Data plot

- Colour schemes are user definable
- Right clicking on plotted data displays extended details
- Right clicking on affiliation data provides detailed site info
- User filtering of data to remove clutter



Graph Features

- User markers plotted on graph
- C1,C2,TX power, RSSI and handovers are plotted
- User filtering of data to remove clutter
- Call activity shown
- Paging function enables large files 10Mb
- Ability to collate graph position on map
- Loss of service clearly defined on graph
- PESQ voice quality scores plotted

Main Panel Features

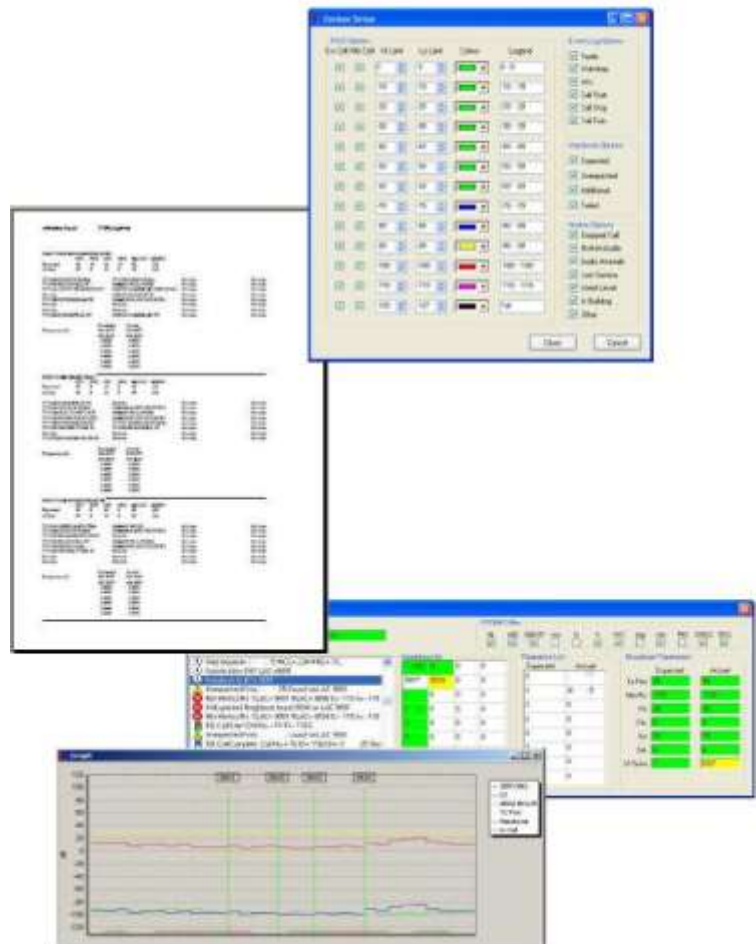
- Serving and neighbour cell RSSI levels
- Call statistics
- Cell handover statistics
- Filter recorded data

Event List Features

- System Information bits fully decoded
- Call start/stop includes frequency and slot information
- Band scan messages indicated

Additional Features

- Cell broadcast parameters automatically verified
- Up to 64 neighbour cell count
- Comprehensive netinfo error handling



NC2020 TECHNICAL INFORMATION

SYSTEM REQUIREMENTS: NC2020	
Processor:	2Ghz processor
Windows:	Windows XP with service pack 3 & windows 7 32bit
RAM:	1Gb RAM
Memory:	Approx. 1Gb of free hard disc space.
USB:	2 USB 2.0 ports
OTHER INFO:	